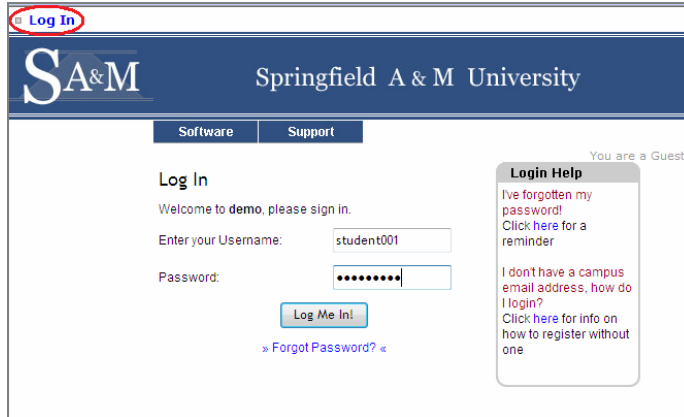


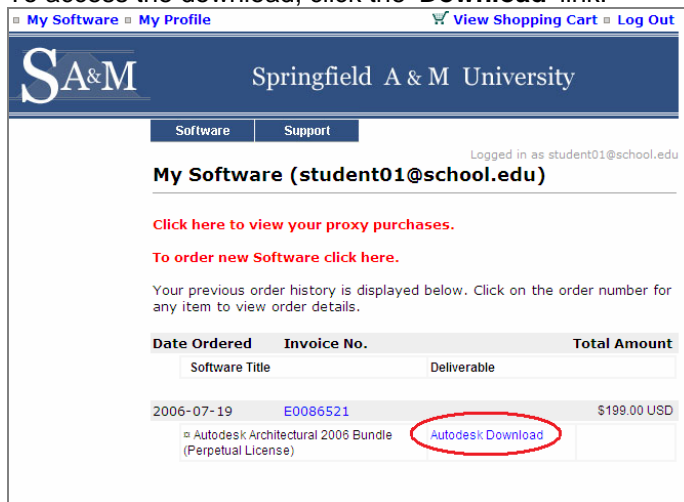
## ELMS Download Guide

*Note: E-academy's website supports Internet Explorer 5.x and Netscape 6.x or above.*

1. Ensure you have your ELMS login information to log in. This is provided either by your school (**school ID** and **password**), or in an automated e-academy registration email.
2. Go to your ELMS storefront and click the '**Login**' link to log in with your **Username** and **Password**.

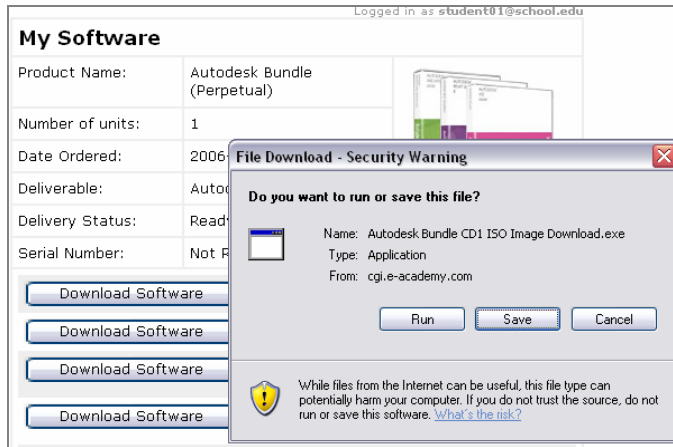



3. Complete your order.
4. Once the transaction has been completed, go to '**My Software**' to view your licensed software and to access the download. To access the download, click the '**Download**' link.

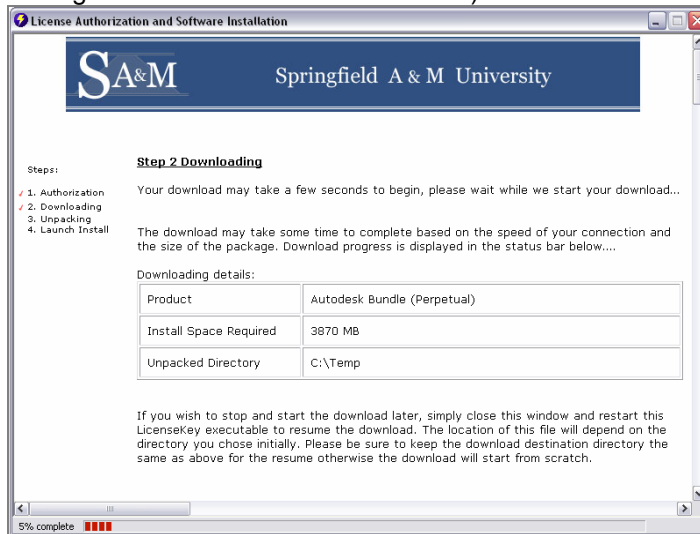


Date Ordered	Invoice No.	Total Amount
2006-07-19	E0086521	\$199.00 USD
Autodesk Architectural 2006 Bundle (Perpetual License)		
Autodesk Download		

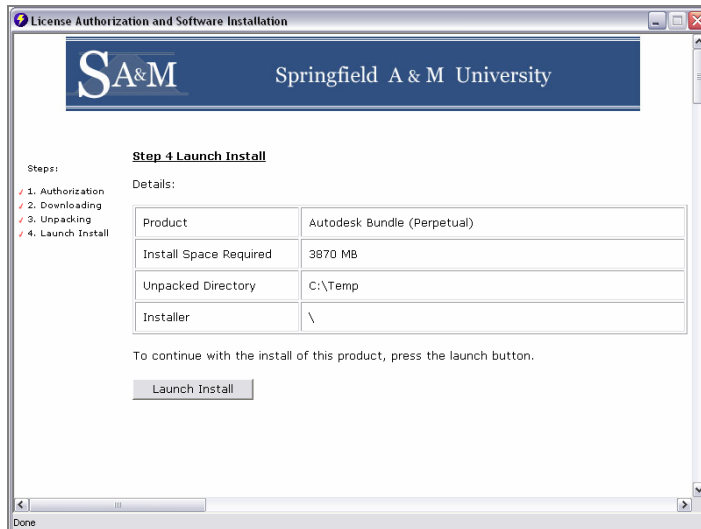
5. On the following page, choose one of the applications and click '**Download Software**'. This will prompt you to download a small .exe file, approximately 400kb, which is used to download and unlock the installation file(s).



6. Save this file to your desktop and **double-click this icon:**  to run the delivery client. It will take you through four steps that are necessary to download your product. (NB: if the icon does not appear as a purple circle with a yellow lightning bolt, try adding “.exe” to the end of the filename).



- a. **Authorization:** This is automatically performed by our system, provided your account is active.
  - b. **Downloading:** Once you select a download folder, click 'continue' to download the file.
  - c. **Unpacking:** This step is performed automatically, and the encrypted downloaded file is unpacked into a format that can be used for installation.
  - d. **Launch Install:** For installation files that are disk images, once you click on the “Launch Install” button, the delivery client will open the folder where the files have been downloaded. Otherwise for direct setup files, clicking this button will automatically start the installation.
7. Once the download is complete, click the ‘**Launch Install**’ button to either begin the installation or to view downloaded disk image files.



**(NB: For .iso or similar disk image files, the BOOT (auto-launch) files are required during installation. You are required to BURN these files to a CD or DVD as an image to successfully complete the install.)**

8. Please follow the instructions and/or documents provided by the publisher's installation wizard.

---

Thank you for choosing e-academy for your software needs.  
If you have any questions or concerns, please contact us at [support@e-academy.com](mailto:support@e-academy.com).